

PRESSURE REDUCING VALVE



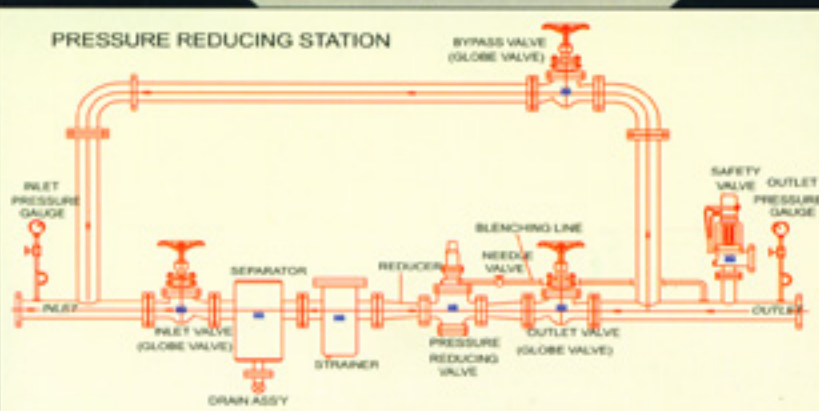
**IBR
APPROVED**



**PILOT OPERATED FOR
ACCURACY OF CONTROL**

Full Lift Reducing Valves

**For high performance on
Steam, Air & Gases**



H.P. Valves Mfg. Co.

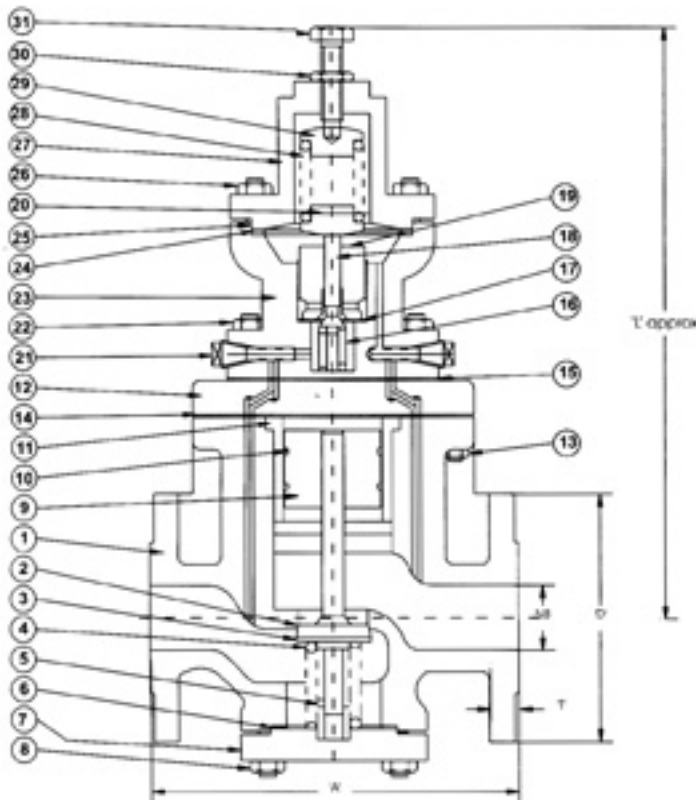
Ahmedabad, India

PRESSURE REDUCING VALVE



DESIGN FEATURES

- ☛ MAXIMUM INLET PRESSURE - 250 psig.
- ☛ MAXIMUM OUTLET PRESSURE - 200 psig.
- ☛ MINIMUM OUTLET PRESSURE - 5 psig.
- ☛ MAXIMUM WORKING TEMPERATURE - 450°C



MATERIAL OF CONSTRUCTION

| Sr. No | PARTS | QTY. | MATERIAL |
|--------|-----------------------------|------|--------------------------------|
| 1 | BODY | 1 | ASTM A 216 GR. WCB |
| 2 | SEAT RING | - | 13 % Cr. SS. FACING (SS 304) |
| 3 | MAIN VALVE DISC | 1 | S.S. AISI 304 |
| 4 | MAIN VALVE SPRING | 1 | SPRING STEEL (C.S.) |
| 5 | BUSH | 1 | S.S. AISI 304 |
| 6 | BOTTEM FLANGE GASKET | 1 | COMPRESSED ASBESTOS FIBER |
| 7 | BOTTEM FLANGE | 1 | CARBON STEEL |
| 8 | BOTTOM FLANGE STUD & NUT | 4 | CARBON STEEL |
| 9 | PISTON | 1 | S.S. AISI 304 |
| 10 | PISTON RING | 2 | CAST IRON |
| 11 | PISTON CYLINDER | 1 | S.S. AISI 410/ AISI 304 |
| 12 | CENTRE PLATE | 1 | CARBON STEEL |
| 13 | BODY STUD & NUT | 6 | CARBON STEEL |
| 14 | CENTRE PLAGE GASKET | 1 | COMPRESSED ASBESTOS FIBER |
| 15 | PILOT VALVE GASKET | 1 | COMPRESSED ASBESTOS FIBER |
| 16 | PILOT VALVE SPRING | 1 | SPRING STEEL (C.S.) |
| 17 | PILOT VALVE GASKET | 1 | COMPRESSED ASBESTOS FIBER |
| 18 | PILOT VALVE | 1 | S.S. AISI 410 / 304 |
| 19 | PILOT VALVE SEAT | 1 | S.S. AISI 410 / 304 |
| 20 | SPRING BUTTON | 1 | CARBON STEEL |
| 21 | PLUG | 2 | CARBON STEEL (1/4" B.S.P) |
| 22 | PILOT VALVE BODY STUD & NUT | 4 | CARBON STEEL |
| 23 | PILOT VALVE BODY | 1 | CARBON STEEL |
| 24 | DIAPHRAGM GASKET | 2 | COMPRESSED ASBESTOS FIBER |
| 25 | DIAPHRAGM | 1 | PHOSPHEROUS BRONZE / S.S. |
| 26 | HOUSING STUD & NUT | 4 | CARBON STEEL |
| 27 | ADJUSTING SPRING HOUSING | 1 | ASTM A 216 GR. WCB / C.S. |
| 28 | ADJUSTING SPRING | 1 | SPRING STEEL (C.S.) |
| 29 | SPRING BUTTON | 1 | CARBON STEEL |
| 30 | LOCK NUT | 1 | CARBON STEEL |
| 31 | ADJUSTING BOLT | 1 | CARBON STEEL |

| SIZE | 'A' | 'NB' | 'D' | 'T' | 'RF.D' | 'NO. OF H' | 'g W' | PCD | 'L' |
|-----------|-----|------|-----|------|--------|------------|-------|-------|-----|
| 1"/25 | 200 | 25 | 121 | 14.3 | 63.5 | 4 | 18 | 87.3 | 300 |
| 1 1/2"/40 | 210 | 38 | 140 | 17.5 | 82.5 | 4 | 18 | 104.7 | 340 |
| 2"/50 | 265 | 51 | 165 | 19 | 102 | 4 | 18 | 127 | 360 |
| 2 1/2"/65 | 275 | 64 | 184 | 19 | 114.5 | 8 | 18 | 146 | 380 |
| 3"/80 | 320 | 76 | 203 | 22.2 | 127 | 8 | 18 | 165 | 400 |
| 4"/100 | 342 | 102 | 229 | 25.4 | 152.5 | 8 | 18 | 190.5 | 435 |
| 6"/150 | 470 | 152 | 305 | 28.6 | 210 | 12 | 22.2 | 260.3 | 480 |

Salient Features

- ☛ Self-actuating, Pilot operated for enhanced accuracy.
- ☛ High Quality Stainless Steel Diaphragm
- ☛ Maintain Constant outlet pressure, Irrespective to changes in Inlet Pressure
- ☛ Suitable for medium & Low, Pressure of Steam, Gas, Air & Liquid.
- ☛ Adjustable spring in different range.
- ☛ Interchangeability of the pilot valve component parts simplifies maintenance
- ☛ Reduced pressure accuracy 1% from full flow to 10% of flow.

HYD. Test Pressure

Body : 77.4 kg/cm² Seat : 51 kg/cm²

| VALVE SIZE IN mm | 15 | 20 | 25 | 40 | 50 | 80 | 100 |
|------------------|-----|----|----|----|----|----|-----|
| CV STANDARD | 2.5 | 6 | 10 | 20 | 35 | 75 | 105 |
| SPECIAL | 1 | 3 | 5 | 10 | 15 | 35 | 50 |

Mfg. by
H.P. Valves Mfg. Co.

7/A, Bansidhar Estate, Bardolpura, O/s Dariapur Gate, Ahmedabad- 16, INDIA

Ph : 079 - 216 66 80, Fax : 079 - 2120945

Web Site : www.hpvalve.com Email : hpvalves@icenet.net